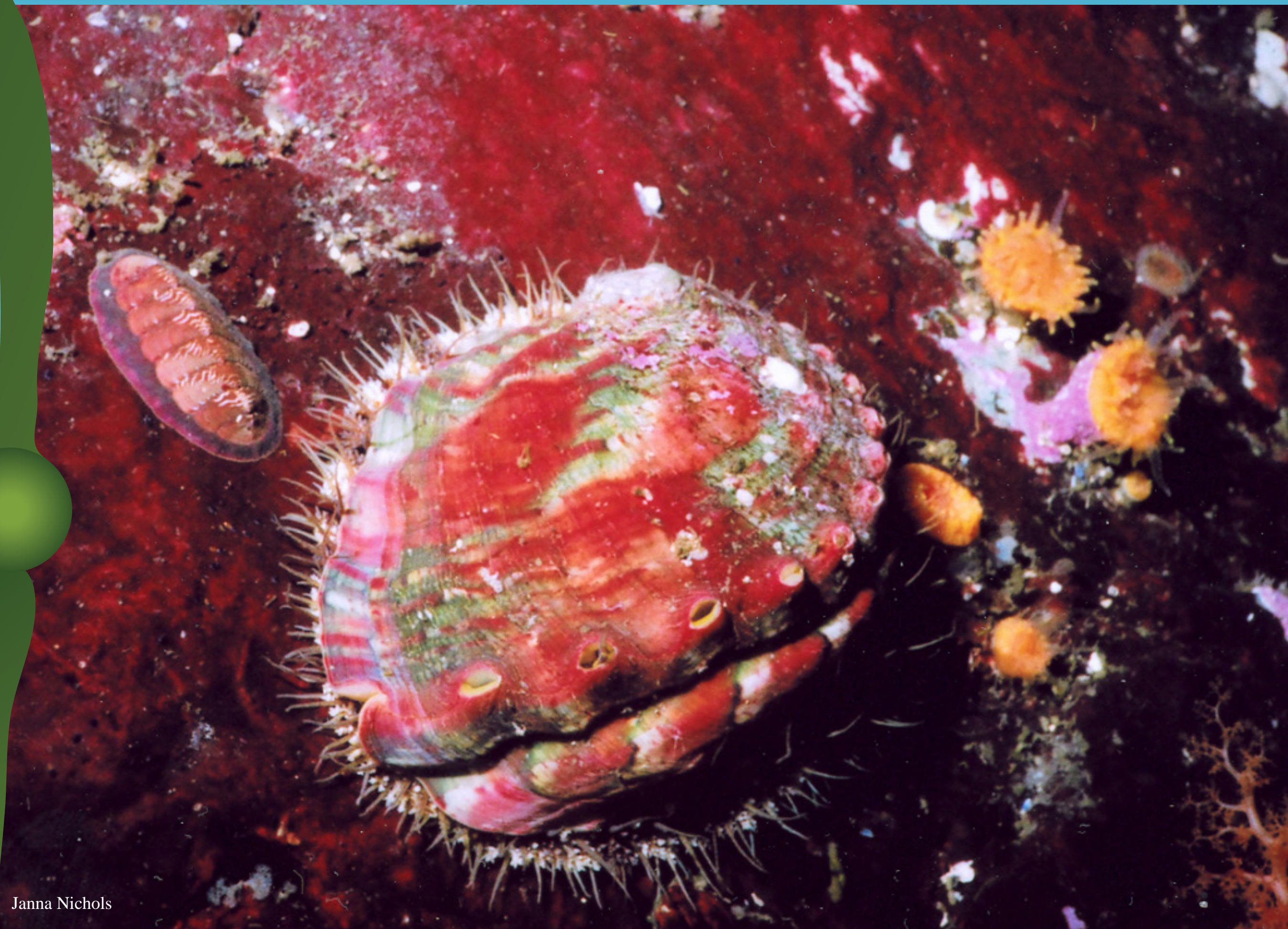


# P I N T O   A B A L O N E   N E E D   Y O U !

Pinto, or northern, abalone are declining at drastic rates. Since 1992, there has been a 77% decline in abundance and fewer young abalone are found. Local abalone populations are becoming rare and may face extinction within a few years.



Janna Nichols

## YOU CAN HELP:

- Hunting pinto abalone is illegal; do not disturb or remove them.
- Anonymously report poachers (1-877-933-9847).
- Share this information.
- Report abalone sightings at [www.reef.org](http://www.reef.org).
- Learn more at [www.pintoabalone.org](http://www.pintoabalone.org).



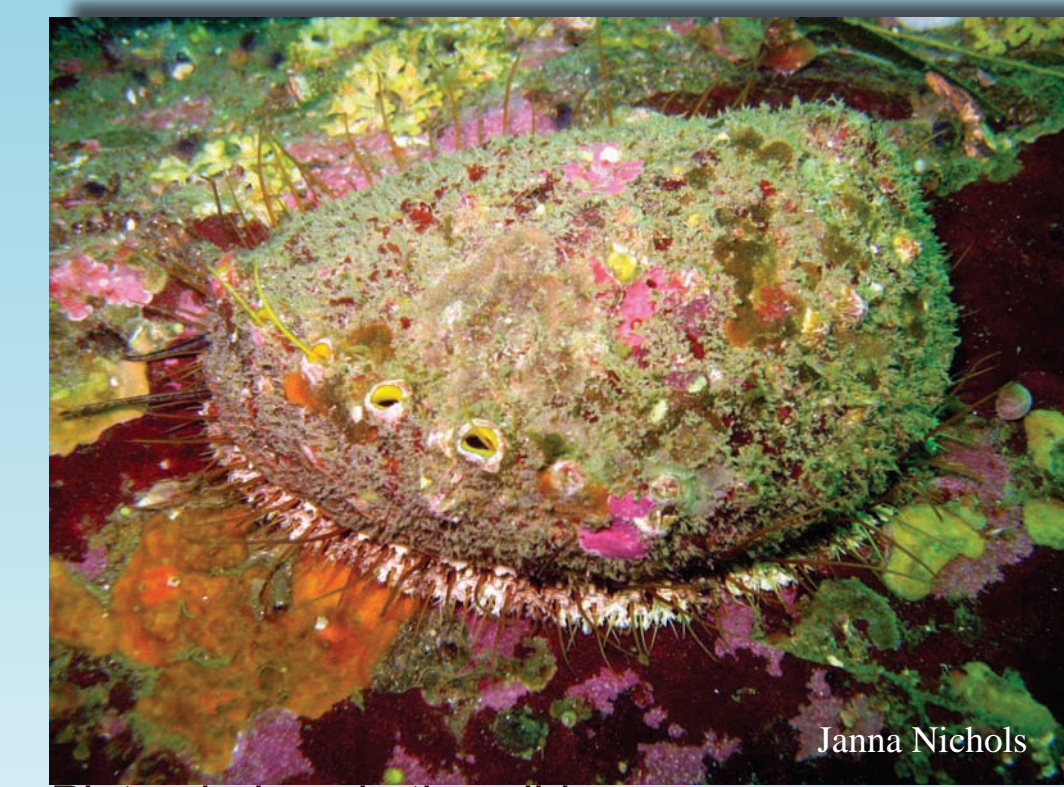
Josh Bouma

Newly settled juvenile abalone, only a few millimeters in length



Josh Bouma

Juvenile abalone raised for restoration



Janna Nichols

Pinto abalone in the wild

## Abalone fast facts:

- Abalone release sperm and eggs into the water, so they must be close together in sufficient numbers to reproduce.
- The pinto abalone is the only known species of abalone in Washington State.
- Washington State has never had a commercial fishery for abalone. Recreational fishing for abalone has been illegal since 1994.
- Partners around the Puget Sound are working together to restore local pinto abalone populations - but this will take time!

